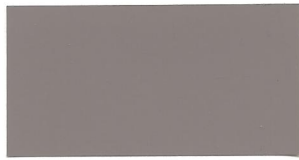


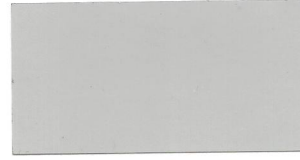
# industrial & marine protective coatings



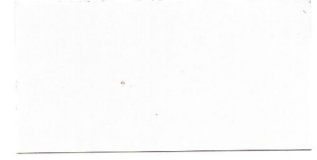
Bolt Brown SW 4001  
LRV 8%



Pumice Stone SW 4010  
LRV 23%



Flint Gray SW 4019  
LRV 47%



Gypsum ❖ SW 4028  
LRV 72%



Modular Tan SW 4002  
LRV 26%



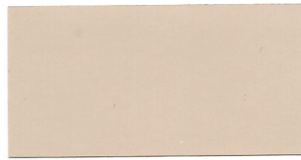
Mortar SW 4011  
LRV 43%



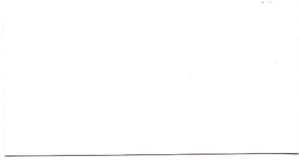
Zephyr SW 4020  
LRV 63%



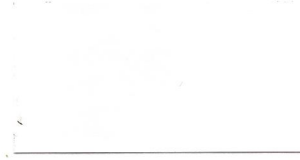
Pillar White SW 4029  
LRV 77%



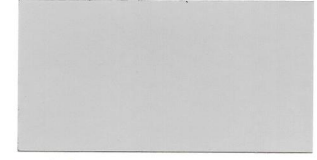
Pallet Tan SW 4003  
LRV 49%



Cirrus White SW 4012  
LRV 74%



Filament SW 4021  
LRV 72%



Nickel SW 4030  
LRV 47%



Tannery • SW 4004  
LRV 64%



Ballast Beige SW 4013  
LRV 65%



Balsam SW 4022  
LRV 62%



Structural Gray SW 4031  
LRV 24%



Cylinder Cream SW 4005  
LRV 74%



Cantilever Tan SW 4014  
LRV 48%



Olivine SW 4023  
LRV 46%



Vacuum Black SW 4032  
LRV 4%



Lodestone SW 4006  
LRV 51%



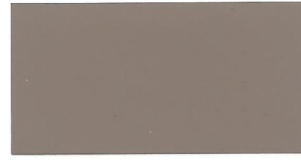
Torque Tan SW 4015  
LRV 35%



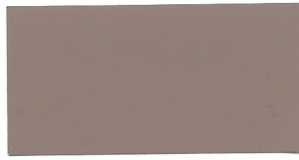
Enviro Green SW 4024  
LRV 15%



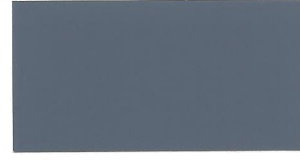
Brass ❖ SW 4033  
LRV 48%



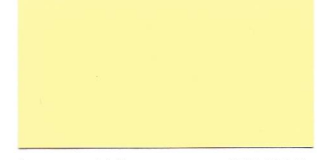
Bronze SW 4007  
LRV 23%



Corrugate Brown SW 4016  
LRV 24%



Anchor Gray SW 4025  
LRV 13%



Junction Yellow • SW 4034  
LRV 69%



Umbra SW 4008  
LRV 9%



Graphite SW 4017  
LRV 5%



Slate Gray SW 4026  
LRV 36%



Optic Yellow SW 4035  
LRV 76%



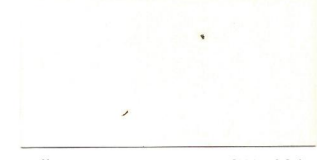
Walnut Brown SW 4009  
LRV 3%



Tower Gray SW 4018  
LRV 18%



Galvano SW 4027  
LRV 58%



Mill Ivory • SW 4036  
LRV 81%

- Interior use only with BAC's or EnviroToners.
- ❖ Interior use only with BAC's.
- Interior use only with EnviroToners.

Color approximates the appearance of the actual coating. Factors such as the type of product, degree of gloss, texture, size and shape of area, lighting, heat, or method of application may cause color variance. Performance of certain colors may be affected by specific exposure environments. Not all colors are available in all Product lines. Contact your local Sherwin-Williams representative for color availability of each product. NOTE: For uniformity of color and gloss, some colors may require multiple coats.



Silica SW 4037 LRV 59%



Carousel Coral SW 4046 LRV 53%



Polymer Blue SW 4055 LRV 33%



Turbine Blue SW 4064 LRV 18%



Copperplate SW 4038 LRV 31%



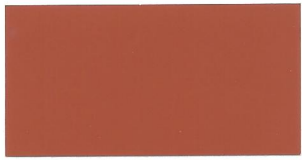
Firedust SW 4047 LRV 30%



Blueprint SW 4056 LRV 6%



Techno Teal SW 4065 LRV 21%



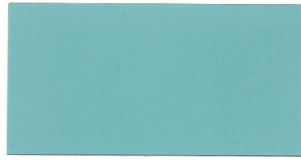
Thermal Orange SW 4039 LRV 18%



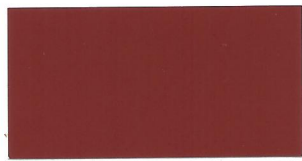
Mason Brick SW 4048 LRV 8%



Toggle Teal SW 4057 LRV 28%



Rotor Turquoise SW 4066 LRV 37%



Deck Red SW 4040 LRV 8%



Camshaft SW 4049 LRV 12%



Current SW 4058 LRV 67%



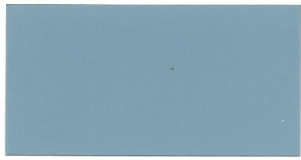
Dewpoint SW 4067 LRV 56%



Precision Plum SW 4041 LRV 15%



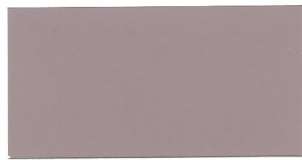
Voltage Violet SW 4050 LRV 36%



Conductor Blue SW 4059 LRV 31%



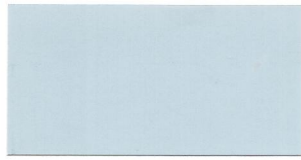
Alloy Aqua SW 4068 LRV 76%



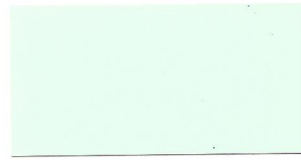
Magnetic Mauve SW 4042 LRV 29%



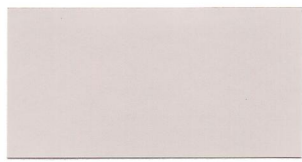
Rhombus SW 4051 LRV 56%



Off Shore SW 4060 LRV 50%



Emerald Ice SW 4069 LRV 78%



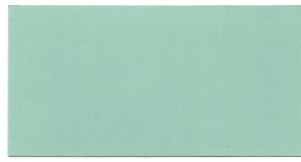
Bearing Taupe SW 4043 LRV 50%



Argent SW 4052 LRV 71%



Hydro Blue SW 4061 LRV 74%



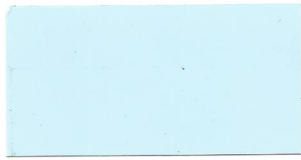
Generator Green SW 4070 LRV 44%



Quartzite SW 4044 LRV 67%



Cool Blue SW 4053 LRV 69%



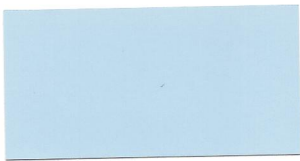
Spillway SW 4062 LRV 60%



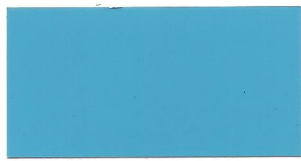
Rain Forest SW 4071 LRV 8%



Ceramic Buff SW 4045 LRV 73%



Basin SW 4054 LRV 51%



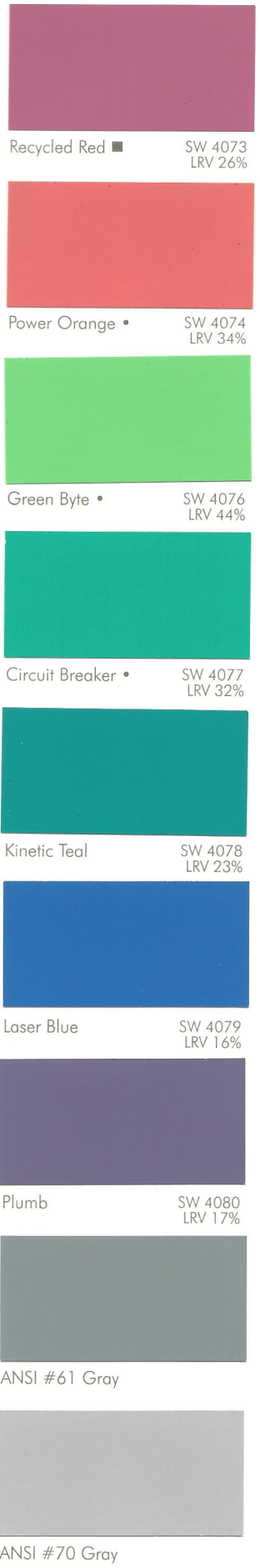
Robotic Blue SW 4063 LRV 31%



Cedar Green SW 4072 LRV 3%

- Interior use only with BAC's or EnviroToners.
- ❖ Interior use only with BAC's.
- Interior use only with EnviroToners.

Color approximates the appearance of the actual coating. Factors such as the type of product, degree of gloss, texture, size and shape of area, lighting, heat, or method of application may cause color variance. Performance of certain colors may be affected by specific exposure environments. Not all colors are available in all Product lines. Contact your local Sherwin-Williams representative for color availability of each product. NOTE: For uniformity of color and gloss, some colors may require multiple coats.



Recycled Red ■ SW 4073 LRV 26%

Power Orange • SW 4074 LRV 34%

Green Byte • SW 4076 LRV 44%

Circuit Breaker • SW 4077 LRV 32%

Kinetic Teal SW 4078 LRV 23%

Laser Blue SW 4079 LRV 16%

Plumb SW 4080 LRV 17%

ANSI #61 Gray

ANSI #70 Gray



Safety Red SW 4081 LRV 11%

International Orange SW 4082 LRV 17%

Safety Orange SW 4083 LRV 17%

Safety Yellow SW 4084 LRV 28%

Safety Green • SW 4085 LRV 29%

Safety Blue SW 4086 LRV 17%

Black SW 4090 LRV 0%

Silver Brite® SW4091 B59S11 Industrial Aluminum Paint B59S4



Ultra White SW 4087 LRV 88%

Extra White SW 7006 LRV 86%

Pure White SW 4089 LRV 85%



Off White



Buff/Tan



Zinc Clad™ Primers



Gray



Red Oxide



**SHERWIN WILLIAMS**



Cirrus Gray HT1

Shale Gray HT2

Thunder Gray HT3

New Toned White HT4



Mill White NSF1

Buff NSF2

Light Blue NSF3

Sanitary White NSF4



Haze Gray CT1

Tile Red CT2

- Interior use only with BAC's or EnviroToners.
- ❖ Interior use only with BAC's.
- Interior use only with EnviroToners.

Color approximates the appearance of the actual coating. Factors such as the type of product, degree of gloss, texture, size and shape of area, lighting, heat, or method of application may cause color variance. Performance of certain colors may be affected by specific exposure environments. Not all colors are available in all Product lines. Contact your local Sherwin-Williams representative for color availability of each product. NOTE: For uniformity of color and gloss, some colors may require multiple coats.